



Features & Amenities

- Black Appliances*
- Backsplashes Available*
- Spacious Walk-in Closets
- Ceiling Fans with Overhead Lighting
- Track Lighting*
- Clothes Care Center
- After School Program Onsite
- 24-Hour Emergency Maintenance
- Pet Friendly (Breed Restrictions Apply)
- Brand New Energy Efficient Windows

Enjoy sought after comfort and convenience and simplify your life. Spacious apartment homes feature many amenities designed to suit all your wants and needs. The management staff provides you unsurpassed service and quality by paying attention to every detail and takes nothing for granted... especially our residents. You owe it to yourself to expect more...and your highest expectations are met here!

" S e H a b l a E s p a n o l "



2835 Villa Creek Drive
Farmers Branch, Tx 75234
Fax: (972) 241-3808

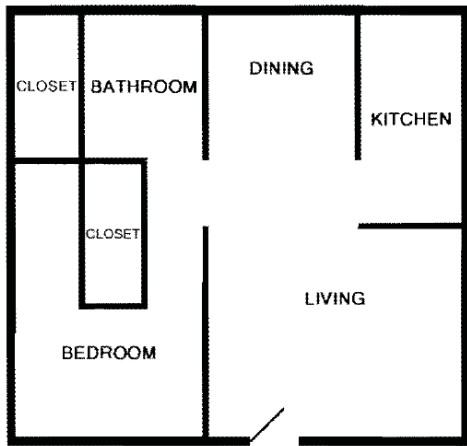
(972) 241-3880

Professionally Managed by

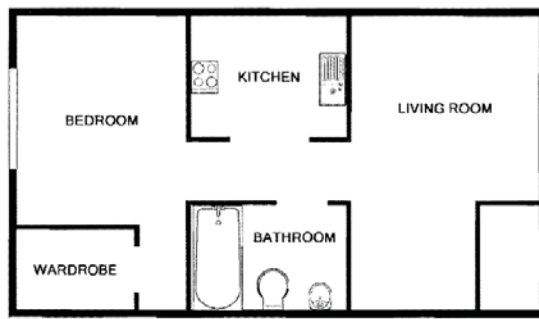


*In select units

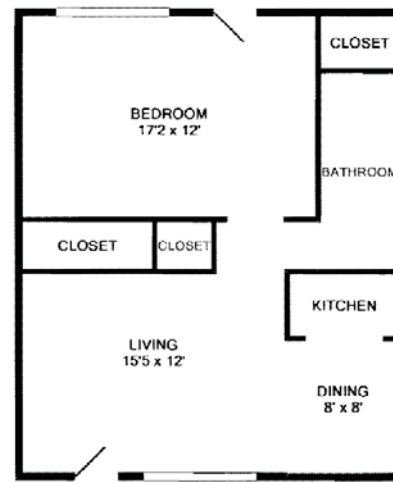
**Breed restrictions may apply



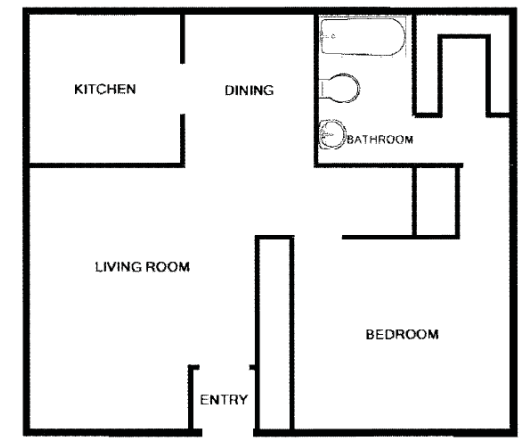
1 Bdrm / 1 Bath 608 Sq. Ft.*



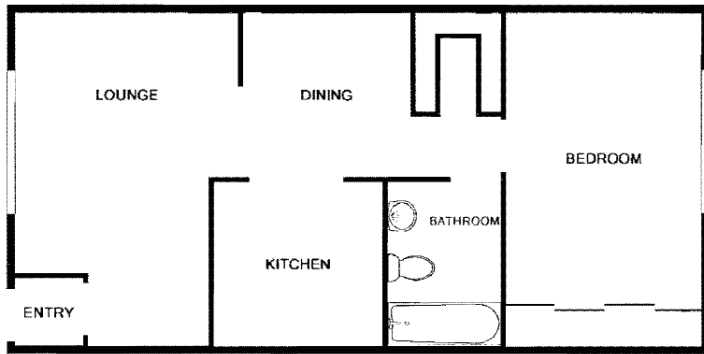
1 Bdrm / 1 Bath 654 Sq. Ft.*



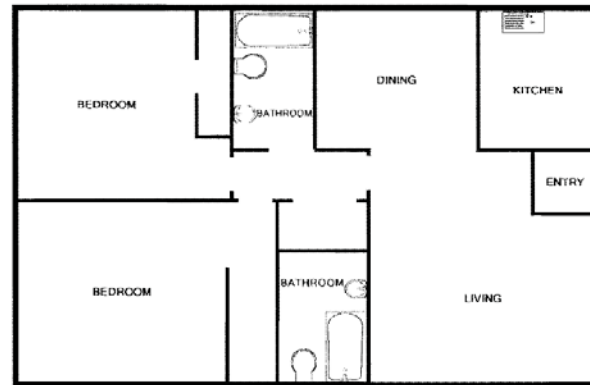
1 Bdrm / 1 Bath 656 Sq. Ft.*



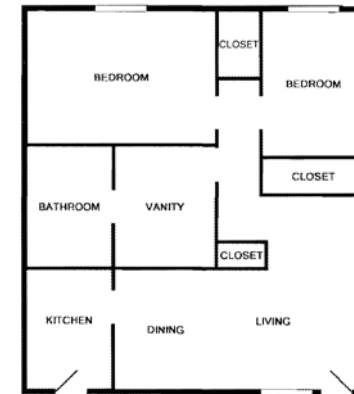
1 Bdrm / 1 Bath 702 Sq. Ft.*



1 Bdrm / 1 Bath 750 Sq. Ft.*

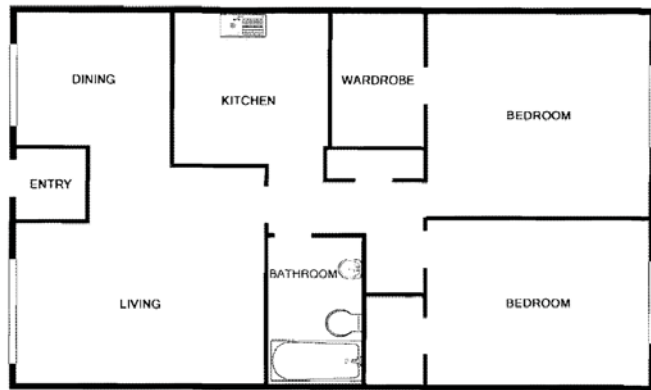


2 Bdrm / 1 Bath 800 Sq. Ft.*



2 Bdrm / 1 Bath 896 Sq. Ft.*

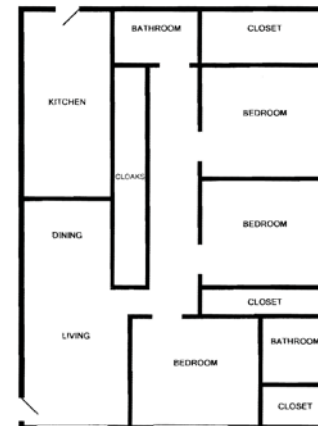
RENT _____
DEPOSIT _____



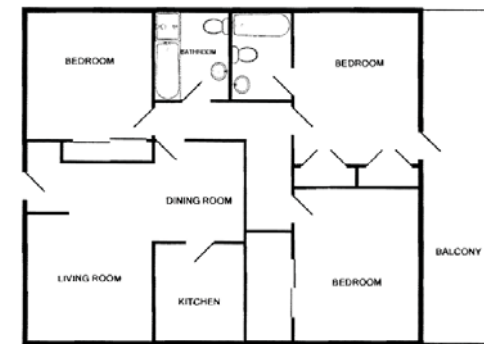
2 Bdrm / 2 Bath 1,000 Sq. Ft.*



2 Bdrm / 2 Bath 1,200 Sq. Ft.*



3 Bdrm / 2 Bath
1,184 Sq. Ft.*



3 Bdrm / 2 Bath 1,287 Sq. Ft.*

*Square footage is approximate Actual floorplans may vary